

Photo report WU_215

Pittler

Remodeling, retrofit

Created hpw29_11_2018.

Pittler CNC lathe
Sinumerik 802 DSL, with cycles and graphics.
12-turret 40 VDI and VDI 50
Tip width 1500 mm, 30 KW spindle drive

Cultivation of new CNC control, new feed motors.
All electrics renewed; PLC for tool turret created.
All relays replaced control to PLC control.



Figure 1: Pittler was years ago a leading lathe manufacturers in Europe. They have compared to index and Georg Fischer.



Figure 2: CNC Sinumerik 802 DSL with Profibus system, ADI 4 modules, etc.



Figure 3: Omron spindle drive 30 KW and Omron feed drives 2 x 3 KW; 20 Nm torque motor. Machine was rebuilt by WIAP AG with new CNC, screw drive and feed motors.



Figure 4: So the machine looked before the renovation.

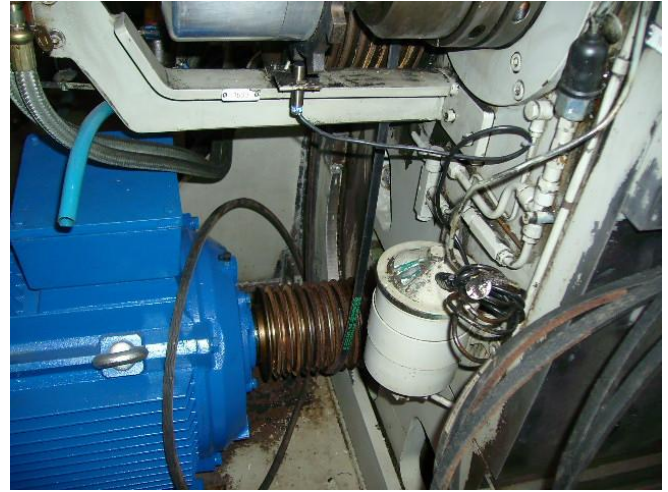


Figure 7: The old pulley of the old spindle drive can be used again.



Figure 5: The old main spindle drive was going to be replaced by a new 30 kW drive.



Figure 8: The new 20 Nm Z-feed drive is placed directly, without a reduction.



Figure 6: A decades on the market, imported machine tool. Pittler, Germany.



Figure 9: The electrical cabinet much of the old was cleared and new installed.



10: For the first test runs you have not yet installed the X-feed motor to adjust everything before.



Figure 11: equipped with hydraulic much on the machine. Tailstock, chuck, bezel, Pinole and the whole turret clamping.



Figure 12: The old panel suspension could well be used again for the new CNC. Very stable.

The WIAP AG continues to expand its machine tools and has a subcontractor base. Whether for new machines or conversions; there are usually used everywhere the same internal components. Thus, the spare parts warranty is secured.

When WIAP AG are not only the old who can do that. For years, the WIAP this training, intensified for the cockroaches. There are always two shaving machines at hand.

The cost of a retrofit (conversion with revision) to a new machine is about 40 to 60% of a new machine, because the basic meat is available. Only an exchange of CNC without drives what is possible today, with analog drives, can not be held rare even among 10 to 20% of the machines new purchase value. Even then, you have the built latest CNC control on the machine so that the operator does not feel he has an old machine. Thanks to the WIAP alarm system design prevents incorrect operations and not know how to do something, backed with messages. This results in a very simple operation for all employees who work on a retrofitted by the WIAP machine. Thus its pleasure to work with the machine.

Distribution and manufacturing, construction, electrical and mechanical, all from one source.

WIAP® AG Ltd SA
 Industriestrasse 48L
 CH-4657 Dulliken



Phone: ++ 41 62 752 42 60
Fax: ++ 41 62 752 48 61
wiap@widmers.info
 www.widmers.info / www.wiap.ch